



Commercial & Residential  
**DOCKFLOATS**





### 5 STEP DOCK STAIRS

- Dog friendly
- Flip up for the winter
- Extra wide non-slip stairs
- Vertical distance from the top of your dock to the bottom of the stairs is 55"



### 4 STEP DOCK LADDER

- Flips up for the winter
- Non-slip ribbed steps
- Vertical distance from the top of your dock to the bottom of the stairs is 45"



### KAYAK / SUP RACK



- The perfect storage solution for your kayak or stand up paddle board
- Highly versatile
- Mounts on your dock, boat house, or back-to-back on the ground!
- Box includes 2 racks, as pictured here, to hold one kayak or stand up paddle board



**DL-5**

**DL-4**

**R-1**

Check us out ! [www.techstarplastics.com](http://www.techstarplastics.com)

# All The Accessories

## BUMPER BOYS™

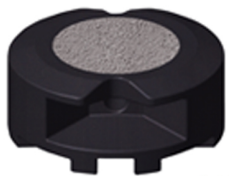


- Keeps your dock protected from damage
- Available in two sizes

BB-7 47.5" x 7" x 2.5"  
BB-9 47.5" x 9" x 3"

## DOCK ANCHOR FORM

- Keeps your dock secure all season long
- Attach your chain and adjust according to the depth of your lake



24" diameter x 10" high  
Weights 250lbs when you fill with concrete

\* Holds 4 bags of self-mix concrete



## USE WITH 2x6 FRAMES

CB5 Corner Bracket  
H5 Hinge  
BP5 Backing Plate

## USE WITH 2x8 FRAMES

CB7 Corner Bracket  
H7 Hinge  
BP7 Backing Plate  
ANCB-7 Anchor Bracket for 2x6 or 2x8 frame



BB-7 & BB-9

AF-250

GALVANIZED DOCK HARDWARE

## TECHSTAR DOCK FLOATS KEEP ALL OF YOUR LUMBER OUT OF THE WATER!



**BF-1**



**BF-12**



**BF-3**

### A Unique Combination of Dock Bumper and Flotation with a 10 YEAR WARRANTY!

#### Features:

- Run the length of your dock on both sides
- Gasoline and wildlife resistant
- Comfortably floats an 8ft wide dock; add center floats for widths over 8ft
- Moulded from 100% virgin linear, low density polyethylene with UV8 stabilizer
- Foam filled with closed cell EPS (expanded polystyrene) so Techstar Bumper Floats are better for your lake than exposed foam billets
- All Techstar floats ensure your frame, hardware and decking stay dry and out of the water!
- Simple construction! Build your frame with our corner brackets and attach floats through moulded bolt holes
- Deck boards will sit flush with the top of the float for a clean finish

**TIP:** Each float is 4ft long, aim to build the length of your dock in 4ft increments (8ft,12ft,16ft etc.)

# Bumper Floats

**3** Check us out ! [www.techstarplastics.com](http://www.techstarplastics.com)

## SPECIFICATIONS & BUILDING GUIDE

### BF-1



At 8ft wide, this dock does not require any center floats.

### BF-12 & AP-12



Any dock width over 8ft will require either one or two rows of center floats, as pictured above, to ensure the maximum stability of your dock.

Want to have the best looking dock on your lake? At an extra cost, Techstar's Bumper Floats are also available in our premium colour sandstone, as pictured below!



Model Number	Outside Dimensions	Flotation (pounds)	Average Wall Thickness	Center Float Model	Shipping Weight	Per Skid
BF-1	24" x 48" x 16"	415	.187	AP-8	43lbs	12
BF-12	24" x 48" x 21"	430	.187	AP-12	43 lbs	12
BF-3	24" x 48" x 25"	700	.250	MF-2448	65lbs	8





**ALL TECHSTAR FLOATS KEEP YOUR LUMBER OUT OF THE WATER !**



**AP-8**

- All Purpose dock floats offer the maximum in design flexibility and economy
- 3 Different heights (8", 12" or 16") allow you to choose your preferred freeboard
- Polyethylene is resistant to aquatic wildlife like muskrats, otters and beavers
- Also gasoline resistant



**AP-12**

- Filled with closed cell expanded polystyrene
- Less wood required for construction so less labour to build your dock
- 6 Moulded mounting holes
- Perfect for any size framing 2x6 or larger



**AP-16**



**REMEMBER:** After you frame your dock, don't forget to finger tighten the plugs located on the top of each float, before laying down your deck boards. The O-Ring ensures a snug seal.

**WHY CHOOSE TECHSTAR'S ALL PURPOSE DOCK FLOATS ?**

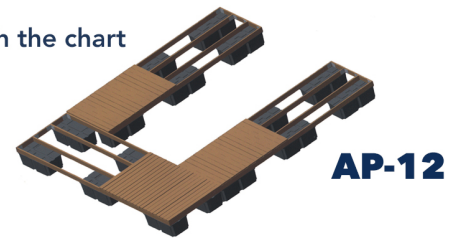
**5** Check us out ! [www.techstarplastics.com](http://www.techstarplastics.com)

# All Purpose Floats

1. Choose your preferred freeboard, then pick your float height, taking into consideration the height of your desired frame.
2. Next, work out the square footage of your desired dock design, and consult with the chart below.

**EXAMPLE:** Let's say you're going to build an 8ft x 20ft rectangular dock using AP-12 floats. Your dock would be 160sq.ft, then divide by 20 (the deck coverage number off the chart). You would require a minimum of 8 floats.

3. Place a float on each corner, and spread the balance out as equally as possible.
4. Adding a ramp will require extra floatation where the ramp and dock meet.



Model Number	Outside Dimensions	Flotation (pounds)	Average Wall Thickness	Sq.Foot Deck Coverage	Shipping Weight	Per Skid
AP-8	24" x 48" x 8"	250	.125	15	28lbs	20
AP-12	24" x 48" x 12"	400	.150	20	35lbs	12
AP-16	24" x 48" x 16"	510	.225	25	45lbs	10

## SPECIFICATIONS & BUILDING GUIDE

## WHEEL FLOATS: FEATURES & SPECIFICATIONS

### Remove Your Dock Effortlessly!

Techstar's Wheel Floats prolong the life of your dock and protect it against ice and winter damage by rolling it right out of the water! This innovative design is perfect for dock builders that offer spring launching and fall removal services.

- Features:**
- Wheel and float are both foam filled with EPS (closed cell expanded polystyrene)
  - Heavy duty 1 7/8 " aluminum axle
  - 6 Mounting holes for easy assembly
  - Compatible with both wood and aluminum dock frames
- TIP** Use AP-16's as center floats if the width of your dock exceeds 8ft



Model Number	Wheel Diameter / Load Capacity	Outside Dimensions (incl.wheel)	Flotation (pounds)	Average Wall Thickness	Shipping Weight	Per Skid
WF-18	23" / 750lbs	24" x 48" x 28"	575	.187	72lbs	4



**7** Video's Online!



## SKID PLATE FLOATS: FEATURES AND SPECIFICATIONS

**Techstar's Skid Plate Floats are Heavy Duty Floats with Mounting Holes Top and Bottom!**



**SP-3648**

- Features:**
- Moulded holes on the bottom of the floats accommodate attachment of skid plates to the bottom of your dock
  - Moulded slots and holes around the floats give you maximum construction flexibility
  - Foam filled for added security



**SP-3648**

Model Number	Outside Dimensions	Flotation (pounds)	Average Wall Thickness	Sq.Foot Deck Coverage	Shipping Weight	Per Skid
SP-2448	24" x 48" x 12"	400	.187	20	35lbs	12
SP-3648	36" x 48" x 12"	600	.187	30	45lbs	6
SP-364816	36" x 48" x 16"	800	.187	40	55lbs	6
SP-4848	48" x 48" x 12"	800	.187	40	55lbs	6
SP-3672	36" x 72" x 12"	900	.187	45	70lbs	6
SP-4872	48" x 72" x 12"	1200	.187	60	90lbs	6

# Skid Plate & Wheel Floats

Check us out ! [www.techstarplastics.com](http://www.techstarplastics.com)



## Techstar's Heavy Duty Shoulder Floats are Perfect for Marinas!

Techstar's Heavy Duty Shoulder Floats are commonly used for commercial docks. Two different float sizes accommodate finger docks 24", 30", 36", 48" wide or wider.

- Features:**
- Model MF-3036 has 8 moulded holes for easy attachment
  - Model MF-2448 has 12 moulded holes
  - Adjustable dock height with different frame heights
  - Comfortably uses larger framing such as 2x12 or 3x10
  - Our toughest floats! HD Shoulder floats are 3/8" thick
  - Moulded cable trough



**MF-2448**

**TIP :** A minimum of one HD Shoulder Float is required for every 25sq.ft of dock surface.

**Example :** Building a dock 60ft x 10ft (600sq.ft) you would need 24 floats. (600sq.ft divided by 25sq.ft = 24)

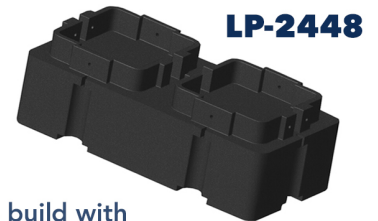
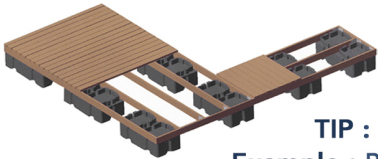
Model Number	Outside Dimensions	Flotation (pounds)	Average Wall Thickness	Sq.Foot Deck Coverage	Shipping Weight	Per Skid
MF-3036	30" x 36" x 22"	575	.375	25	65lbs	4
MF-2448	24" x 48" x 22"	630	.375	25	70lbs	8

## HEAVY DUTY : FEATURES AND SPECIFICATIONS

# Shoulder Floats

## Techstar's Low Profile Shoulder Floats Give You a Lower Freeboard!

- Features:**
- Uniquely moulded with a mounting shoulder and holes to bolt through to your frame
  - Ideal for many applications including commercial and large residential docks
  - Use any size framing lumber 2x6 or larger and bolt sideways through your choice of 8 moulded holes
  - Foam filled for added security
  - 12" of the float sit under your frame
  - Dock builders find this to be one of the easiest floats to build with



**TIP :** A minimum of one LP float is required for every 20sq.ft of dock surface

**Example :** Building a dock 30ft x 12ft (360sq.ft) you would need a minimum of 18 floats. (360sq.ft divided by 20sq.ft = 18)

Model Number	Outside Dimensions	Flotation (pounds)	Average Wall Thickness	Sq.Foot Deck Coverage	Shipping Weight	Per Skid
LP-2448	24" x 48" x 16"	425	.250	20	48lbs	10

## LOW PROFILE : FEATURES AND SPECIFICATIONS